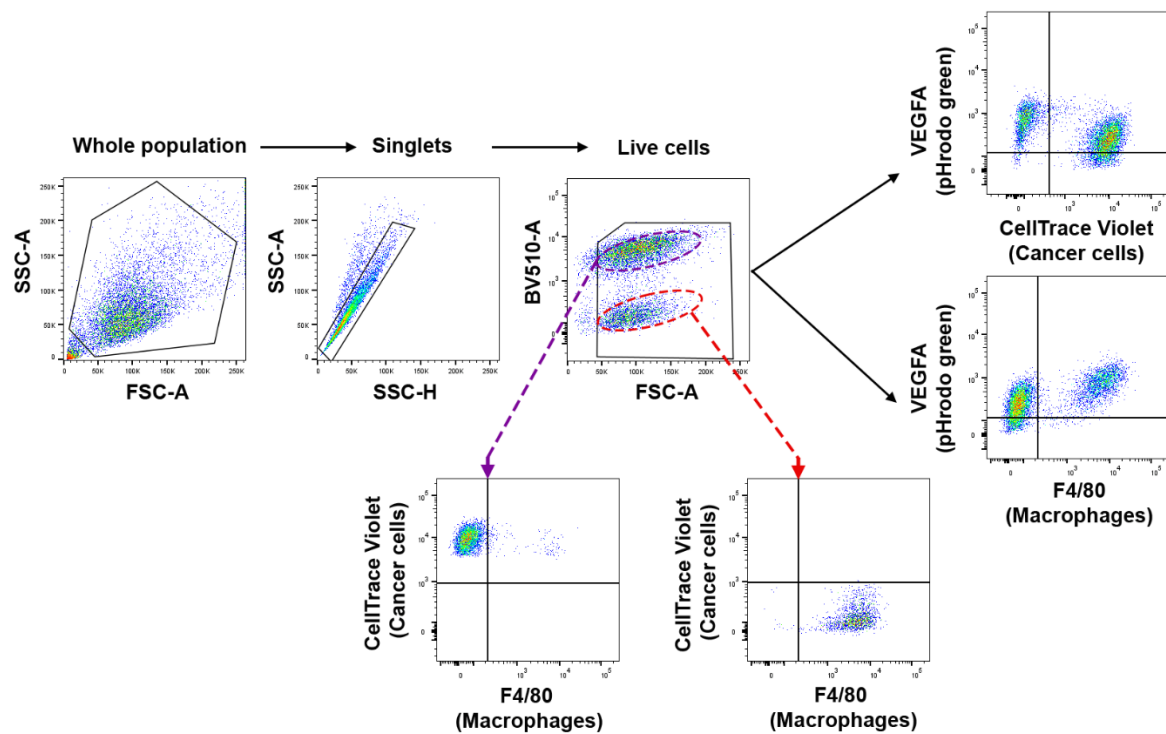


Supplemental Figure 1. Gating strategy for the flow cytometry experiment in Figure 5A.

Shown is the gating strategy used for analysis of the BMDMs in F4/80 versus SSC-A dot plot and in F4/80 versus CD86, F4/80 versus CD206, and F4/80 versus FcγR bivariate dot plots.



Supplemental Figure 2. Gating strategy for the flow cytometry experiment in Figure 5B.

Shown is the gating strategy used for analysis of the co-cultured cancer cells (stained with CellTrace Violet) and BMDMs (F4/80 positive) in CellTrace Violet versus VEGFA, F4/80 versus VEGFA, and F4/80 versus CellTrace Violet bivariate dot plots.