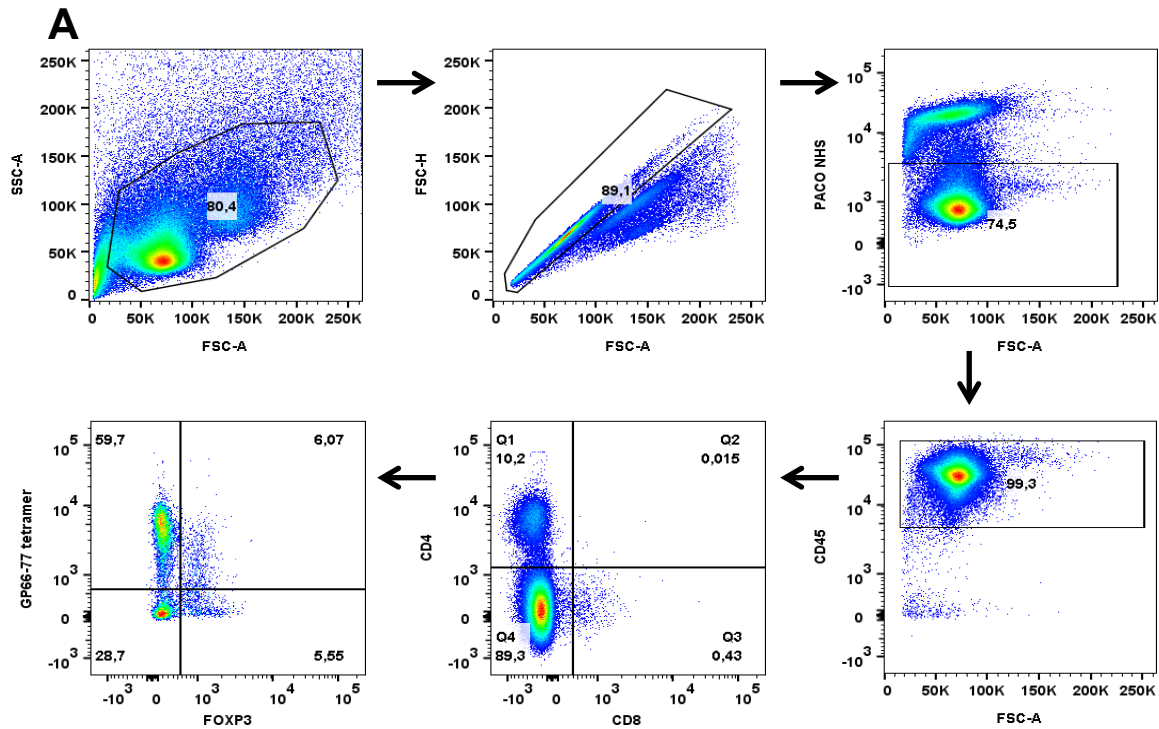
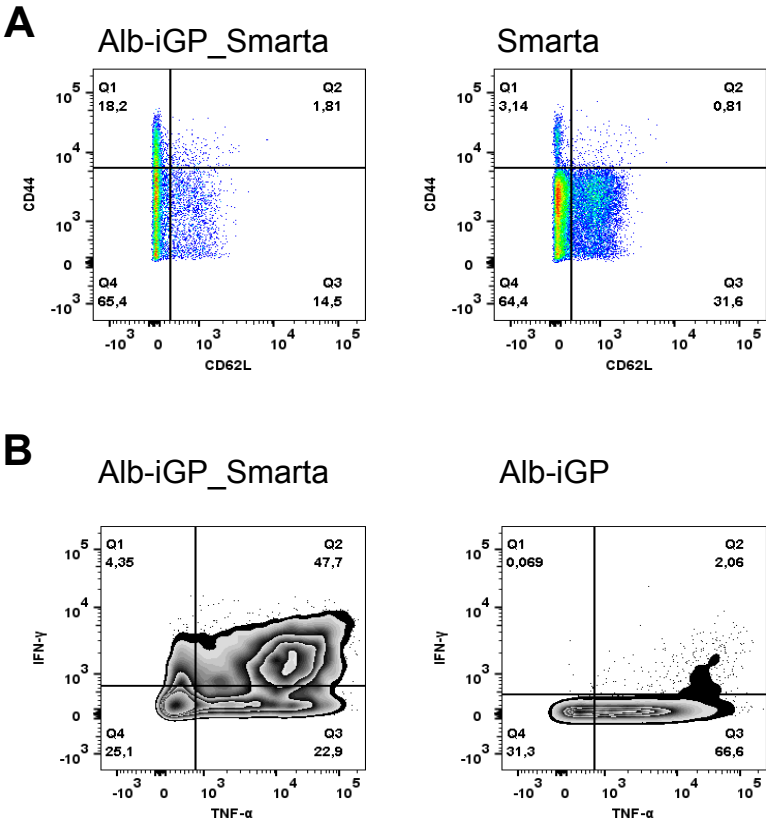


Supplementary Figure 1



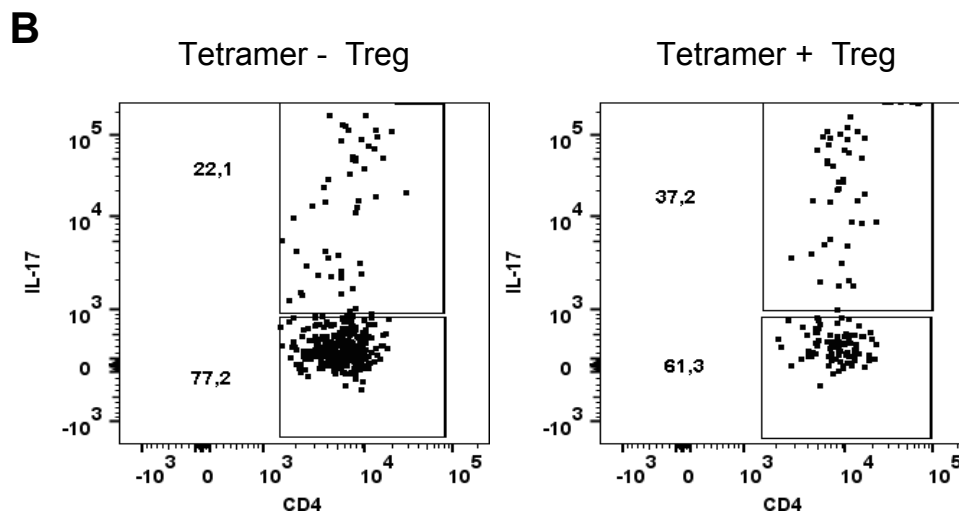
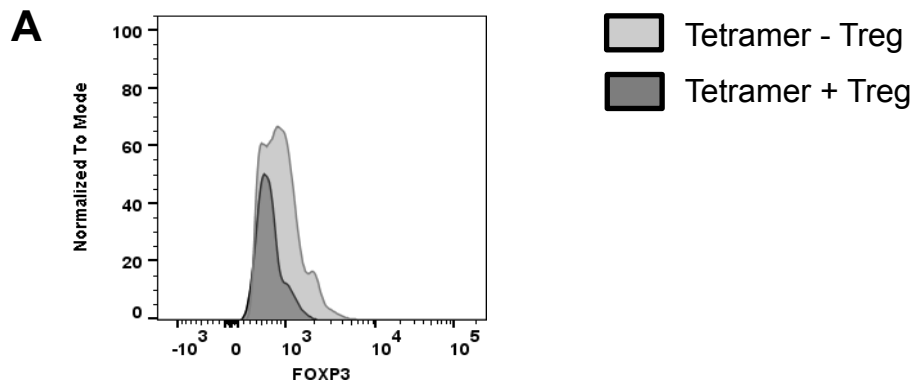
General gating strategy for flow cytometric analyses. In the first three steps, cellular debris (FSC vs. SSC), doublets (FSC-H vs. FSC-A) and dead cells (PACO-NHS vs. FSC-A) were excluded. Then, the residual CD45⁺ hematopoietic cells were further subgated according to the respective population of interest. In this example, hepatic antigen-specific tetramer⁺CD4⁺Foxp3⁺ Tregs of an Alb-IGP_Smarta mouse are shown.

Supplementary Figure 2



Characterization of liver-infiltrating CD4 T cells in Alb-iGP_Smarta mice. Representative dot plots showing (A) CD44^{hi}CD62L negative effector/memory cells and (B) IFN gamma and TNF producing CD4 T cells.

Supplementary Figure 3



Characterization of hepatic T helper-like Tregs in Alb-iGP_Smarta mice.

(A) Representative histogram showing the Mean Fluorescence Intensity of Foxp3 expression in antigen-specific (Tetramer+) versus non-specific (Tetramer-) Tregs. (B) Representative dot plots of IL-17 expressing non-specific (left) versus antigen-specific (right) Tregs.